

20

21



Midlands Community Foundation
ANNUAL REPORT

INVESTING IN THE POWER OF COMMUNITY

MISSION

The mission of Midlands Community Foundation is to benefit the diverse needs of the Sarpy and Cass county communities by providing financial support, involvement and service.

FOCUS

The focus of Midlands Community Foundation is to assist with community development by improving and enhancing the quality of life for the residents of Sarpy and Cass counties.

SERVICE AREA



ASSETS UNDER MANAGEMENT

\$10.7 MILLION



88 cents of every dollar donated directly supports programming

THE HISTORY OF MCF

This past fiscal year, Midlands Community Foundation (MCF) celebrates ten years of being a public community foundation serving Sarpy and Cass counties. We hope that you, our donors, reflect on our shared legacy and feel the same pride and excitement of our commitment and leadership to our community.

We have transformed from our original beginnings to a cultivated advocacy showcasing our investment in our community. Midlands Community Foundation began as a health foundation established in 1981 at Midlands Community Hospital (MCH). In 1994 due to MCH being sold to a for-profit hospital organization, the Midlands Community Hospital Foundation was closed, and a private community-based foundation named Midlands Community Foundation (MCF) was created.

In 2007, the MCF Board of Directors recognized the need to provide our community donors a simple, powerful, and highly personal approach to giving. The MCF Board of Directors and staff formed a Strategic Research Committee to implement and activate a new form of giving worthy of the people of Sarpy and Cass counties. In fiscal year June 2010, with the hard work of the Strategic Research Committee, the Internal Revenue Service reclassified Midlands Community Foundation from a private foundation to a public community foundation charity. This reclassification allowed MCF to provide donors with the opportunity to create and customize new charitable funds to assist them in accomplishing their charitable objectives.

Since becoming a public charity 10 years ago, MCF has **established 145 charitable funds** and increased its net assets from **\$2.0 million** to **\$10.7 million**. As a community foundation, MCF is here to serve and add value to our donors' philanthropic priorities.

INVESTING IN THE POWER OF COMMUNITY



A handwritten signature in black ink that reads "Patrick J. Sullivan".

Patrick J. Sullivan
Board of Directors President



A handwritten signature in black ink that reads "Tonee M. Gay".

Tonee M. Gay
Executive Director

Dear Friends,

"Investing in the Power of Community" is at the heart of everything we do at Midlands Community Foundation (MCF). As our community faced unprecedented challenges this past fiscal year due to the COVID-19 public health and economic crisis, we centered ourselves to help find partnerships, hope and inspiration through these troubling times. As a result, we created the MCF Coronavirus Response Fund which financially supported more than 20 nonprofit organizations providing critical services to our community. Thank you for standing with us during our community's time of need!

As we prepare for what comes next, we are committed to building more programs, projects, and initiatives to resolve and lead to positive change, strengthening Sarpy and Cass counties. We remain solid in our commitment to serve the many nonprofit organizations and charitable funds within our service area through our biannual grants, discretionary gifts, and Match programs.

Over the last year, MCF was honored to receive the Sarpy County Chamber Excellence and Non-Profit of the Year awards. **We also are proud to report that 88% of every dollar donated to MCF is used directly to support programing, outperforming the nonprofit industry median of 80%.** We pride ourselves on being a trusted, compassionate, and permanent community resource for those who have received grants from MCF and/or those who have created charitable funds.

This fiscal year represents the 10th anniversary of MCF becoming a public charity, a milestone of great achievement and leadership. This anniversary prompts a moment of reflection. We are very proud of the work we have accomplished in our community. The MCF Board of Directors and staff have provided thoughtful and principled leadership. The growth and respect our community has given MCF is due to our deep understanding of values that guide this Foundation. We strive each and every day to be accountable, responsible, accessible, and loyal to our donors and community. We strive to find effective and innovative ways to support organizations and facilitate change in each of our areas of focus.

This year's annual report highlights how we worked hard to unite our community toward hope and commitment to our donors. As we work, we grow, and we learn from each other. Our charitable funds and nonprofits featured in this year's report made MCF's investment in our community more vibrant and created a legacy for all.

We recognize and embrace our responsibility to serve as a leader. As our community grows and changes, it is important to work together to make our visions a reality. **NOW** is the time to give and collaborate to help make a difference. **We invite you to join us in "Investing in the Power of Community" by becoming an MCF Sustainer.**

MCF'S CORONAVIRUS RESPONSE FUND

In an attempt to lessen the impact of the COVID-19 pandemic in our community, Midlands Community Foundation (MCF) established a Coronavirus Response Fund. As a community foundation, MCF designed the fund to complement the work of local public health, nonprofit, and government entities, and to expand local capacity to support individuals and families experiencing hardship because of the outbreak and related closures and disruptions.

Thanks to the generosity of our individual donors, spearheaded by significant contributions from Facebook and Google, nearly \$185,000 was raised. Through our partnerships with other nonprofit organizations, government, and business partners, including the Sarpy County Chamber of Commerce, MCF was able to immediately deploy flexible resources to the hardest-hit nonprofits and households within Sarpy and Cass counties that have been impacted most by the pandemic.

To date, MCF has granted \$158,146 in essential funding to provide emergency food, rent and utility assistance, PPE supplies, technology, and other financial help to the following:

- ◆ All Communities Outreach Services
- ◆ Assure Women's Center
- ◆ Banister's Leadership Academy
- ◆ Bellevue Public School District
- ◆ Big Brothers Big Sisters of the Midlands
- ◆ Boys & Girls Club of the Midlands
- ◆ Boystown
- ◆ Eastern Nebraska Community Action Partnership
- ◆ Fontenelle Forest
- ◆ Food Bank for the Heartland
- ◆ Food Bank for the Heartland-Cass County
- ◆ HETRA
- ◆ Housing Foundation for Sarpy County
- ◆ Lift Up Sarpy County
- ◆ Lofte Community Theatre
- ◆ Mercy Housing Midwest
- ◆ Mosaic
- ◆ Moving Veterans Forward
- ◆ Southeast Nebraska Community Action (SENCA)
- ◆ Sarpy Community YMCA
- ◆ Sarpy County Chamber Foundation
- ◆ Tri-City Food Pantry

Now is the time to come together to help those in need. Google is proud to support the Midlands Community Foundation as they work with organizations and programs to provide residents with access to food, healthcare and basic needs. These dollars will also support small businesses who face continued challenges during this time. We're deeply appreciative of their efforts to help those experiencing hardship because of the pandemic.

Dan Harbeke
Head of Policy and
External Affairs, Google

Since breaking ground on our Papillion Data Center in 2017, we've called Sarpy County home, so we are happy to have the opportunity to support our community's small businesses, nonprofits and municipal organizations. Our hope is that the implementation of these relief grants will help these organizations rebuild and recover so they can continue to provide jobs, products, and services for Sarpy County.

Matt Sexton
Community Development
Regional Manager, Facebook



“Food Bank for the Heartland has a longtime relationship with the Midlands Community Foundation. The Foundation’s support for our Backpack Program is instrumental. When the COVID-19 pandemic caused more families to seek food assistance, MCF was there to support the Food Bank in our efforts to meet an estimated 40 percent increase in need. We live in an incredibly generous and other-centered community. MCF exemplifies that we are all in this together.”

Brian Barks

President and CEO, Foodbank for the Heartland

“Thank you again for your support during this challenging time! We are very grateful for Midlands Community Foundation’s quick and generous gift to help with our technology!”

Elizabeth Donner

Chief Development Officer,
Boys & Girls Clubs of the Midlands





CHARITABLE FUNDS

Establishing a charitable fund with MCF provides donors immediate access to all the privileges of a 501(c)3 charitable corporation. Funds operate under MCF's tax-exempt umbrella, allowing donors to take the maximum allowable tax deduction available. MCF maintains responsibility for financial and administrative services, including recording and receipting contributions, conducting due diligence on recommended grant recipients, managing donor records, managing cash and investments, obtaining an annual financial audit, preparing and filing the IRS Form 990 and issuing fund financial reports to the organization. Following are types of funds available at MCF:

Affiliated Fund

An Affiliated Fund is created by a committee of local community leaders. Local leaders will educate family, friends and businesses about the benefit of supporting such a fund. MCF will handle the administrative details which allow you the time to grow your local community fund.

Designated Fund

A Designated Fund supports the good work of a specific program or project. This fund channels your gift to a charitable cause that provides a lasting benefit.

Expendable – allows the fund to be spent to the point of exhaustion and have an immediate impact in the community.

Endowed – principal will not be spent and can grow over time, providing a source of lasting support.

Donor Advised Fund

A Donor Advised Fund allows donors to make irrevocable tax-deductible contributions to the Foundation, which provides maximum flexibility, immediate tax benefits, tax free growth of funds,

a record of donations, and freedom from the responsibility and cost of legal and administrative details.

Scholarship Fund

A Scholarship Fund is set up to help a specified group of people pay for education in a particular field. It is an excellent way to help deserving students pay for school/education.

Field of Interest Fund

A Field of Interest Fund is an endowed fund that allows donors to designate and support a particular area of charitable interest.

Total Number of Charitable Funds Established at MCF: 147

MCF established 12 new charitable funds in FY 2020 including:

- Addisyn Pfeifer Memorial Fund
- Addisyn Pfeifer Scholarship Fund
- Dragon Football Booster Club Fund
- Friends of the Bohemian Cemetery Omaha Fund
- Louisville B.U.I.L.D. Fund
- Mary Beth Harrold Scholarship Fund
- National Association of State Directors of Veterans Affairs
Affiliated General Fund
- P&J Hartnett Family Fund
- Papillion Fire Department Fund
- Papillion LaVista TeamMates Program Fund
- Papillion Softball Woolhiser Memorial Scholarship
- Rise Omaha Fund

FUND SPOTLIGHT

Dominik Walters Memorial Fund

The Dominik Walters Memorial Fund was established at Midlands Community Foundation (MCF) by Dominik's parents, Ryan and Tiffany Walters, and his sister, Nora (aka, Boon), to honor Dom by helping children and families in the community.

Ryan and Tiffany describe Dominik as an energetic, happy four-year-old who loved to run and play, and for everyone around him to be happy. In August 2018, while visiting the family cabin in Minnesota, the Walters unfortunately lost Dom when he suffered an unexpected and massive cardiac arrest while doing cannonballs off the dock. MCF is honored to partner with the Walters as they turn the tragedy of losing their son into something positive for the community, a playground built in memory of Dom at Chalco Hills Recreation Area in Omaha, an area the Walters spent every Sunday afternoon with Dom.

Through generous donations to the Dominik Walters Memorial Fund at MCF, including a matching grant from the playground equipment company, BCI Burke Company, and a partnership with the Papio-Missouri River Natural Resources District, Dom's Park is becoming a reality. The playground will replace current playground equipment that is over 30 years old. It will be located in the northwest corner near Picnic Area A at Chalco Hills and is set to open in summer 2021.



“When we set out to build Dom’s Park as a lasting legacy of our son, Dominik, we never imagined the relationships our effort would create along the way. The Dominik Walters Memorial Fund could not be what it is today without the generosity, resources, connections, flexibility, and compassion of everyone involved with Midlands Community Foundation, including the staff we work with on a regular basis.”

Tiffany and Ryan Walters

CHARITABLE FUNDS

MIDLANDS COMMUNITY FOUNDATION

Midlands Community Foundation Fund

MCF Coronavirus Response Fund

Designated Endowed Funds

Anderson Grove Presbyterian Church Fund
Sarpy County Fair Fund
Sarpy County Historical Foundation Fund

Designated Expendable Funds

14th Hour Foundation Fund
Alex Shives Memorial Fund
American Heroes Park Fund
Anderson Grove Presbyterian Church
– Marion Reed Trust Fund
Auntie Em's Angels Fund
A Monster's Mission Fund
Bellevue Woman's Club Fund
Benson Plant Rescue Fund
Cass County Arts & Entertainment Fund
Cass County CASA Fund
Daybreak Fund
Dominik Walters Memorial Fund
ECC Fund
Friends of the Bohemian Cemetery Fund (new)
Gretna Volunteer Fire & Rescue Department Fund
Healthy Sarpy and Cass County Fund
Kiwanis Club of Bellevue Fund
The Laurel Hill Cemetery Association Maintenance Fund
The Laurel Hill Cemetery Association Perpetual Special
Care Trust Fund
Least of My Brethren Fund
Lift Up Sarpy County Fund
Lofte Community Theatre Fund
Louisville Ball Parents Association Fund
MCF Education Fund
MCF Military Fund
Miguel Keith Project Fund
Moving Veterans Forward Fund
Ms. Pat's Kids Fund
National Association of State Directors
of Veterans Affairs Fund
National Veterans Tribute Network Fund
NCDAA Constitutional Defense Fund
Nebraska Fallen Heroes Fund
Nebraska Heat Youth Program Fund
Nebraska Parent & Responder Partnership Fund
Papillion Fire Department Fund (new)

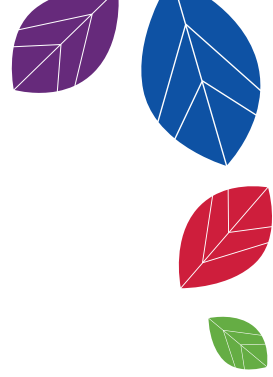
Papillion-LaVista Community Theatre Fund
Papillion-LaVista Schools Foundation Fund
Papillion-LaVista TeamMates Program Fund (new)
Papillion Library Foundation Fund
Papillion Senior Center Fund
Papillion Volunteer Fire Department Fund
Patriotic Productions Fund
Paws for Justice Fund
Rise Omaha Fund (new)
Salute Our Military Community Fund
Sarpy County Chamber of Commerce Foundation Fund
Sarpy County Historical Society and Museum Fund
Sarpy County Sports Commission Fund
Splash Pads for Bellevue Fund
Springfield Volunteer Fire and Rescue Department Fund
Titan Defenders Fund
Veterans Legal Support Network Fund
Veterans Resource Network Fund
Weeping Water Community Booster Fund
Youth Frontiers Fund

Donor Advised Funds

Antle Family Fund
BB Charitable Trust Fund
CB Charitable Trust Fund
Bob and Bindy Charitable Fund
Brewer Family Fund
Calek-Polikov Foundation Fund
Harlan and Cherie Metschke Charitable Fund
Heimes Corp Charitable Fund
Jaksich Timmerman Fund
John and Tressa Jungers Charitable Fund
Madeline Chase Charitable Foundation Fund
Maiwand Jezails Fund
Mother Teresa Fund
Neal Wachholtz Charitable Fund
Patrick Insulation/Cavanaugh Family Fund
Paula Wachholtz Charitable Fund
Robert and Janice Batt Foundation Fund
Temoshek Family Fund
Tim and Tonee Gay Charitable Fund

Field of Interest Funds

MCF Arts Fund
MCF Children in Crisis Fund
MCF Community Development Fund
MCF Economic Development Fund
MCF Health Care Fund
MCF Human Service Fund



Scholarship Funds

Alex Shives Memorial Scholarship Fund
Bob and Vicki Andersen Scholarship Fund
Bob Mohr Baseball Scholarship Fund
Chris E. Stauffer Scholarship Fund
GHS Class of 1968 Memorial Scholarship Fund
Kaiti Williams Memorial Scholarship Fund
Mark and Rose Delaney Memorial Scholarship Fund
Mary Beth Harrold Scholarship Fund (new)
Miss Omaha Scholarship Fund
Papillion Softball Woolhiser Memorial Scholarship Fund (new)
Sarpy County Bar Association Scholarship Fund

BELLEVUE COMMUNITY FOUNDATION

BCF General Fund

Designated Funds

Bike Trail Fund
Light Up Bellevue Fund
Olde Towne Development Corporation Fund
Tennis Courts Fund

Donor Advised Fund

Tom and Mary Hansen Fund

GRETNA COMMUNITY FOUNDATION FUND

GCF General Fund

Designated Endowed Funds

Gretna Neighbors Fund
Gretna Volunteer Fire Department Fund

Designated Expendable Funds

Addisyn Pfeifer Memorial Fund (new)
Bright Future Foundation Fund
City of Gretna Swimming Pool and Aquatics Center Fund
Dragon Football Booster Club Fund (new)
Dragons Closet Fund
Gretna Area Chamber of Commerce Fund
Gretna Band Parent's Fund
Gretna Days Community Improvement Fund
Gretna Downtown Association Fund
Gretna HomeTown Heroes Fund
Gretna Neighbors Food Pantry Fund
Gretna Optimists Fund
Gretna YMCA Fund
Little Giants Foundation Fund
Matt's Music Memorial Fund
Optimists Metro Area Youth Foundation Supporting Families Battling Childhood Cancer Fund

Field of Interest Funds

Gretna Children in Crisis Fund
Gretna Senior Citizen's Fund

Donor Advised Funds

Jeff and Shirley Boyer Family Fund
Jim and Dorothy Dickinson Memorial Fund
Ephesians 2:8-10 Fund
Huber Charitable Fund
Jim and Susan Koesters Charitable Fund
P&J Hartnett Family Fund (new)
Sump Charitable Fund

Scholarship Fund

Addisyn Pfeifer Scholarship Fund (new)
Gretna Area Chamber of Commerce Scholarship Fund

LOUISVILLE AREA FOUNDATION FUND (NEW)

Louisville Area Foundation Fund

Designated Funds

Louisville Athletic Booster Club Fund
Louisville B.U.I.L.D. Fund (new)

Donor Advised Funds

Downs Family Donor Advised Fund
Habrock Family Donor Advised Fund

NATIONAL ASSOCIATION OF STATE DIRECTORS OF VETERANS AFFAIRS FUND (NEW)

NASDVA General Fund

SARPY COUNTY SHERIFF'S FOUNDATION FUND (NEW)

Sarpy County Sheriff's Foundation Fund

SPRINGFIELD COMMUNITY FOUNDATION

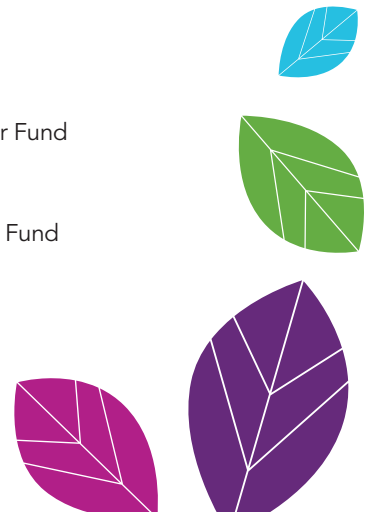
SCF General Fund

Designated Funds

SCF Kozy Korner Fund
SCF Park Account Fund
SCF Springfield Community Center Fund
SCF Springfield Library Fund

Scholarship Fund

SCF Fleming Groesser Scholarship Fund



FUND/GRANTEE SPOTLIGHT

"Our partner facilities in Sarpy and Cass counties greatly appreciate the Midlands Community Foundation for being a part of Merrymakers Association. They are grateful for the performers coming to share their talents with the senior residents. Music is a favorite activity of seniors and they love the Merrymakers. Thank you Midlands Community Foundation."

Sandy Lemke

Executive Director, Merrymakers Association



"Kids Can at Gilder Elementary provides an after-school program and STEMsmart Academy for kids each day. If we did not have grant support from MCF, we would not be able to bring in as many providers and give kids as many opportunities. Without the educational and extracurricular activities we provide them, a lot of these kids would go home to empty houses, with no homework help and without learning all of the career options available. We keep kids off the streets and are able to see academic growth in these children through their grades as we work directly with the school and teachers. We know after school programs work"

Beth Loftus

Site Director, Kids Can Out-of-School Gilder Elementary



MCF GRANT RECIPIENTS

FALL 2019 GRANTS: \$97,301

- ◆ **Assistance League of Omaha** Operation School Bell
- ◆ **Assure Women's Center** Healthy relationship education speakers
- ◆ **Autism Action Partnership** Circle of Friends social skills program
- ◆ **Banister's Leadership Academy** Night LIFE Program
- ◆ **Bellevue Fire Department** Honor Guard compulsory equipment
- ◆ **Boys & Girls Clubs of the Midlands** Annual Arts Program at Bryan Middle School
- ◆ **College Possible** High school programming at Bellevue East, Papillion-LaVista and Papillion-LaVista South
- ◆ **Common Fund of the Heartland** Utility Assistance Fund
- ◆ **Greater Omaha Attendance & Learning Services Center** Transportation, communication and technology costs for advocates
- ◆ **Happy Paws** Financial assistance for pet spaying and neutering and emergency medical treatment
- ◆ **Heartland Equine Therapeutic Riding Academy** Therapy Services, Adaptive Riding and Life Skills Programs
- ◆ **Kids Can Community Center** STEM-smart Program at Gilder Elementary
- ◆ **Latino Center of the Midlands** Pathways to Success Program at Bellevue East, Bellevue West and Bryan high schools
- ◆ **Nebraska Children's Home Society** Children and Family Center's Teen and Young Parent Program
- ◆ **Nebraska Mission of Mercy** Two-day free dental clinic at Bellevue Lied Center
- ◆ **Omaha Performing Arts** NE High School Theatre Awards Program
- ◆ **OneWorld Community Health Centers, Inc.** Mobile dental clinic for children
- ◆ **Papillion Area Historical Society** New heating/AC system at Portal School
- ◆ **Radio Talking Book Service** RTBN services in additional care facilities and senior centers in Sarpy/Cass counties
- ◆ **Sarpy Community YMCA** LIVESTRONG cancer survivor support group
- ◆ **Twin Ridge Elementary PTA** Playground equipment at Twin Ridge Elementary School
- ◆ **Village of Elmwood Nebraska** Accessible sidewalks at Bess Streeter Aldrich Park

GRANTS – FISCAL YEAR 2020

TOTAL GRANTS AWARDED

\$192,836

DISCRETIONARY GIFTS AWARDED

\$11,686

GRANTS

Grants awarded twice annually with February 1 and August 1 deadlines.

IMPACT

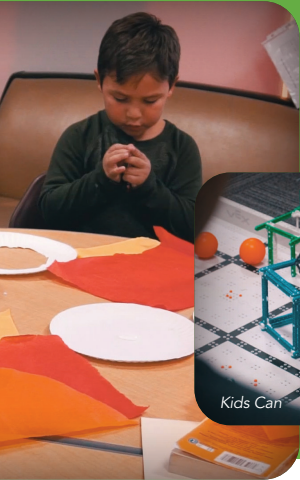
76 organizations benefitted from MCF's grants and gifts.

MCF GRANTS TOTAL AWARDED (2010-2020)

\$2.01 MILLION

DISCRETIONARY GIFTS AWARDED

\$104,841



"We currently have 30 active members and provide service to 49 square miles with about 300 runs per year. We are thankful to MCF because several years ago when we were in need of our first defibrillator, they were there for us. Now with the donations we receive from the public to our charitable fund, we can give them to MCF and it is a seamless transaction. They help with the thank yous, the investments, and with purchases. For our department, it gives us a lot of pride when the pager goes off, we are there for somebody's worst day of their life, and if we make a difference in that day, maybe save a life and/or just help people off the ground, that gives us a lot of pride to serve our community"

Chad Zimmerman
Springfield Volunteer Fire Department

SPRING 2020 GRANTS: \$95,535

- **Martin Graves, Bellevue American Legion Post 339** Post 339 Food Pantry
- **The Durham Museum** Field trips for K-5 Sarpy/Cass county students
- **Eastern Nebraska Community Action Partnership** Laptop purchase
- **Gretna Days Community Improvement Fund** Peterson Park shelter and picnic tables
- **Gross Catholic High School** Transport students to community service project locations
- **Housing Foundation for Sarpy County** Ride Connection Program
- **Justice for Our Neighbors d/b/a/ Immigrant Legal Center** Nebraska Immigration Legal Assistance Hotline support
- **Joslyn Art Museum** School and teacher programming including tours and training
- **Junior Achievement of the Midlands, Inc.** Junior Achievement Program at St. Columbkille, Carriage Hill and Gross Catholic schools
- **Light Up Bellevue Fund** Decorative lighting at Washington Park and on Mission Avenue
- **Lincoln Medical Education Partnership** SCIP Intervention and Prevention Training
- **Mercy Housing Midwest** Resident Services food pantry
- **Merrymakers Association** Monthly professional musical entertainment for senior residents at assisted living and long-term care facilities in Sarpy and Cass counties
- **Nebraska Shakespeare Festival, Inc.** Interactive workshops for four Sarpy and Cass schools
- **Nebraska Vietnam Veterans Memorial Foundation** Historian to write copy for 11 memorial obelisks
- **Omaha Symphony Association** Choral Collaborative for Bellevue West choir
- **Papillion Community Foundation** Commemorative Butterfly and Pollinator Garden project
- **Papillion LaVista Arts Network** Portable sound system
- **Police Athletics for Community Engagement (PACE)** 80 new soccer balls for teams in program
- **Share A Fare, Inc.** Transportation for visually impaired
- **Sheltering Tree, Inc.** Growth Opportunities for Apartment Living Success (GOALS) classes
- **Special Olympics Nebraska** Program costs for annual flag football competition at Papillion Landing
- **TeamMates Mentoring Program of Bellevue** TeamMates summer camp
- **Tri City Food Pantry** Meat for pantry's Sarpy County clients

2019-2020 MATCH PROGRAM

FUNDS



\$794,821

\$481,154

qualified for matching funds



79
charitable funds
were impacted



DONORS
1,170



5 NEW FUNDS
ESTABLISHED IN 2020

MATCH PROGRAM RESULTS SINCE INCEPTION (2014-2020)

FUNDS

\$4,759,349

\$2,046,863

qualified for matching funds



DONORS
4,526

2020 REFLECTION BALL

FUNDS RAISED

\$115,000+



Grants awarded to nonprofit organizations that provide programs and services in Sarpy and Cass counties with an emphasis on First Responders.



400 PARTICIPANTS



**2020 Reflection
Award Recipient:**
Bob Olson
Honorary Chairs:
Pam and
Rod Buethe

REFLECTION BALL TOTAL RAISED (2010-2020)

\$1.2 MILLION



Save the Date

MCF 2022 Reflection Ball
Saturday, January 22, 2022

2020 GOLF TOURNAMENT



Due to the COVID-19 pandemic, MCF rescheduled its May 2020 golf tournament to August 2020, which fell into our Fiscal Year 2021.



Save the Date for MCF's 2021 Golf Tournament

Monday, August 9, 2021 • Oak Hills Country Club
Registration - 11 am • Shotgun Start - Noon

GOLF TOURNAMENT TOTAL RAISED (2010-2020)

\$360,667



BOARD OF DIRECTORS

The Midlands Community Foundation Board of Directors is made up of individuals from the Sarpy and Cass county areas who bring a high degree of involvement to the Foundation and its mission.

EXECUTIVE BOARD



Patrick Sullivan
President



Kevin Dasher
Vice President,
Treasurer/Secretary



Karla Rupiper
Past President



Tom Ackley
Member-at-Large



Julie Bear
Member-at-Large



Mary Gawecki
Member-at-Large



Rick Iske
Member-at-Large

STAFF



Tonee Gay
Executive Director



Diane Knicky
Director of
Operations and
Public Relations



Andrea Hansen
Senior Accountant

BOARD MEMBERS



Janet Barna
Gretna



Brenda Carlson
LaVista



Jonathan Davidson
Gretna



Jan Davis
Gretna



Valerie Downs
Louisville



Kara Habrock
Louisville



Mary Beth Harrold
Papillion*



Jim Langley
Papillion



Lee Polikov
Bellevue



Matt Pospisil
Bellevue



Barb Slattery
Nehawka



Ken Summerfield
Papillion



Jim Thompson
LaVista



Kathy Wendlandt
Gretna

In Memoriam

*Mary Beth Harrold dedicated 38 years to Midlands Community Foundation, 28 of those years as a Board Member. She passed away in March 2020 and MCF and her family established the Mary Beth Harrold Scholarship Fund as a tribute to her.



Midlands Community
FOUNDATION

217 North Jefferson Street
Papillion, NE 68046
402.991.8027

Non-Profit Org
U.S. Postage
Paid
Omaha, NE
Permit No. 6565

midlandscommunity.org

 [midlandscommunityfoundation](https://www.facebook.com/midlandscommunityfoundation)

 [@Midlandscomfoun](https://twitter.com/Midlandscomfoun)



MCF Coronavirus Response Fund Grant Recipient – Sarpy Community YMCA